

**SOFTDASH ANYWHERE FOR PALM OS DEVICES
SOFTWARE MANUAL**



7/1/2007

SOFTDASH ANYWHERE INSTALLATION MANUAL FOR PALM OS DEVICES
Rev A, Issue 2

TABLE OF CONTENTS

- 1. REQUIREMENTS 2
 - a. *For A Computer* 2
 - b. *For The Palm Device* 2

- 2. LOADING THE SOFTDASH ANYWHERE PROGRAM..... 3
 - a. *Loading the IBM Java VM program into Palm OS handheld device*3-7
 - b. *Installing the SoftDash Anywhere program into the Palm OS handheld device* 8

- 3. USING THE SOFTDASH ANYWHERE PROGRAM ON THE PALM DEVICE9-10

If you do not have advanced experienced with using a Palm OS Device and/or connecting a computer to a PDA; we **HIGHLY** recommend reviewing all of the instructions below from beginning to end, before starting the installation of software.

1. REQUIREMENTS:

a. For The Computer...

- Operating System: 2000, ME, XP, 2003 Server, (not Vista)
- 10 MB of free hard drive space
- One open/unused USB port
- Palm Desktop (with HotSync Manager and PalmOne Quick Install)
- A web browser (e.g. Internet Explorer)
- An active internet connection
- One available USB port

b. For The Palm Device...

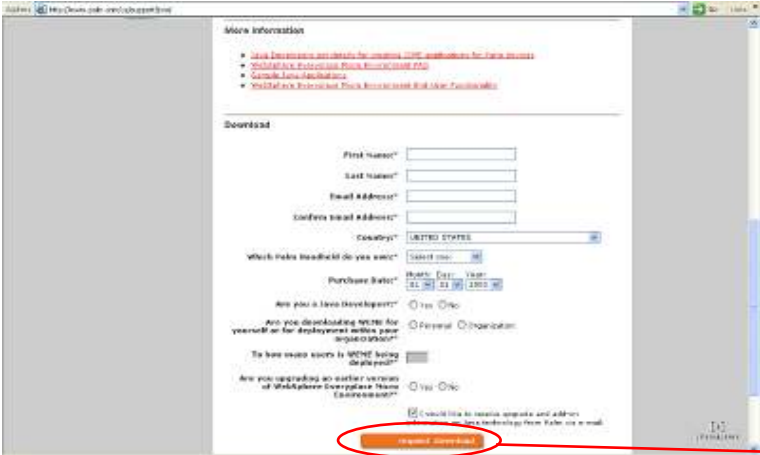
- Operating System: Palm OS 5
- USB cable for computer connectivity
- IBM Java VM (see your device manual or the manufacturer's website)
- Data plan with internet enabled (Please contact your carrier for further information)
- 3 MB of free storage space

2. LOADING THE SOFTDASH ANYWHERE PROGRAM

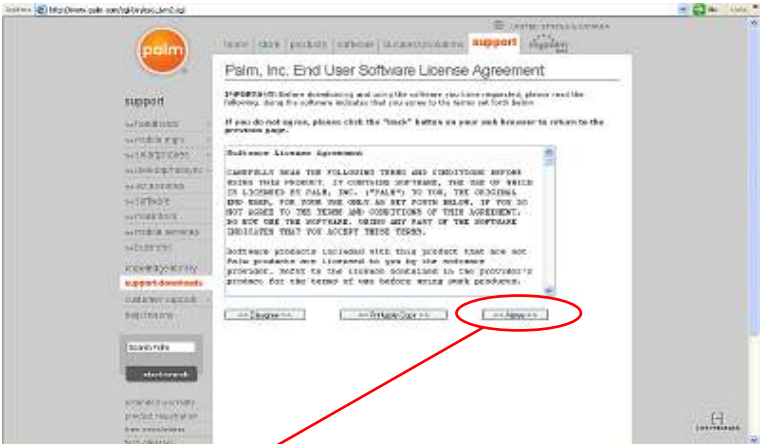
a. Loading the IBM Java VM program onto your Palm OS device

- o SoftDash Anywhere is a Java program, therefore you must use IBM Java VM, for the Palm device to access the SoftDash Anywhere Program on your Palm handheld device

Go to: <http://www.palm.com/us/support/jvm/>

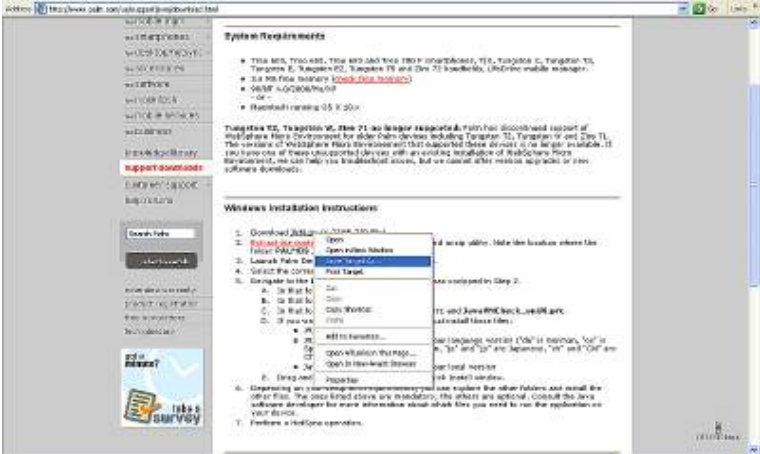


You must register on the Palm website to download the Java VM software... Scroll to the bottom of the page and fill-out the form, and then click the [request download] button



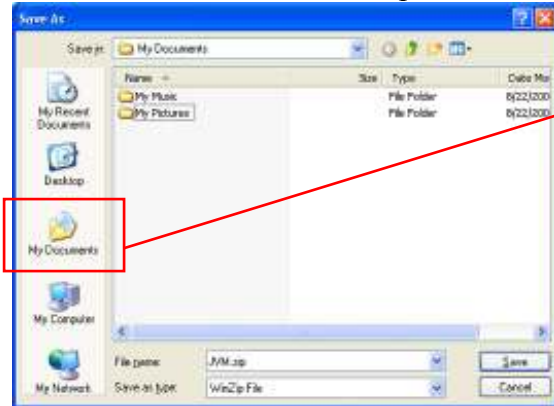
Click the [<< Agree >>] button

Under 'Windows Installation Instructions', right-click on the 'JVM.zip' link



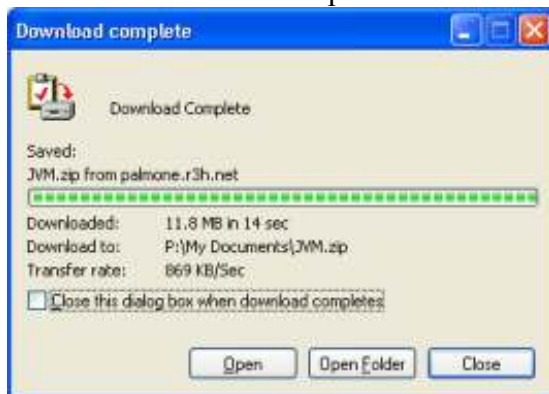
Select 'Save Target As...' from the shortcut menu

Select a location to save the zip file into, we recommend 'My Documents'



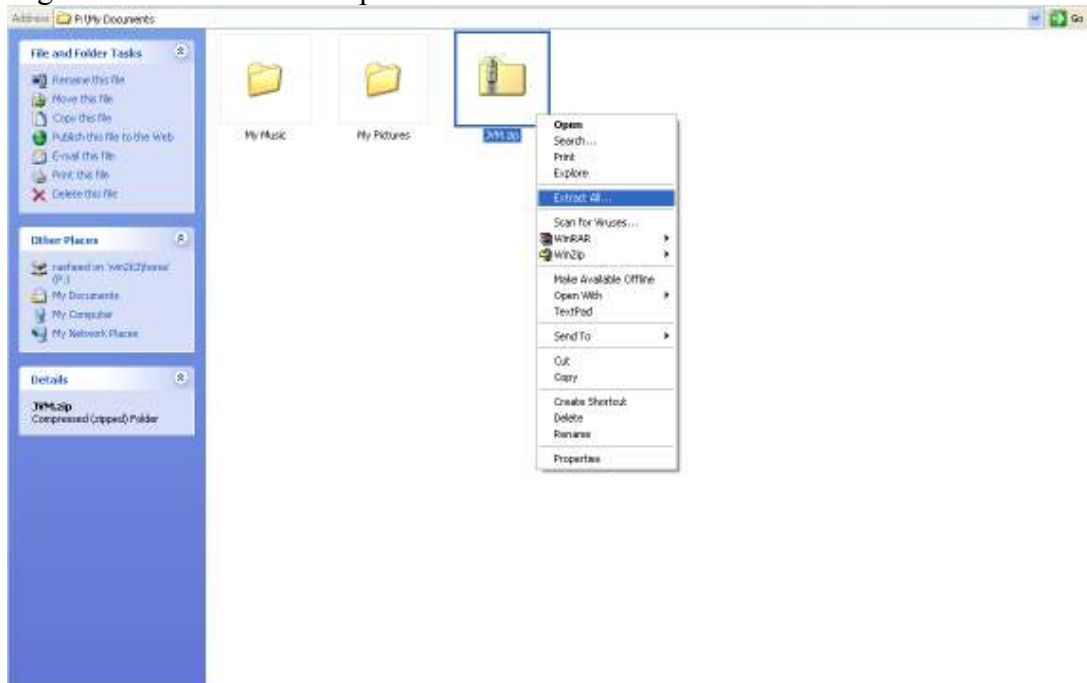
Click the [Save]

When the download completes



Click the [Open Folder] button

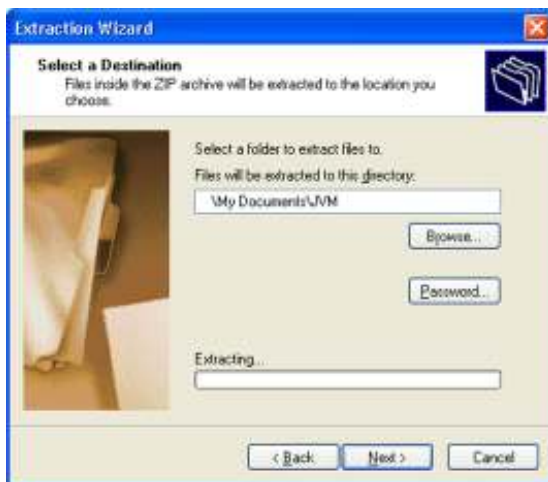
Right-Click on the 'JVM.zip' file



Select 'Extract All...' from the shortcut menu

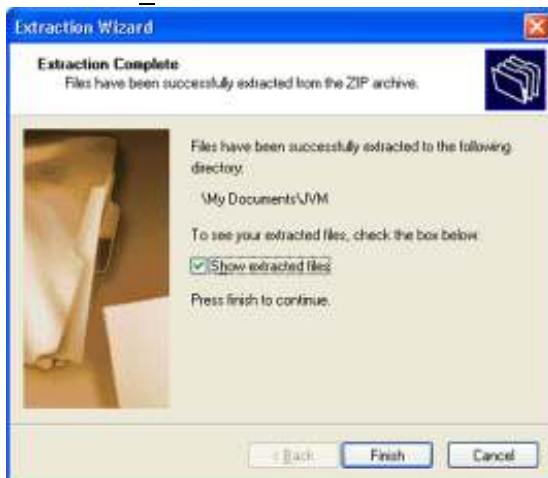


Click the [Next >]



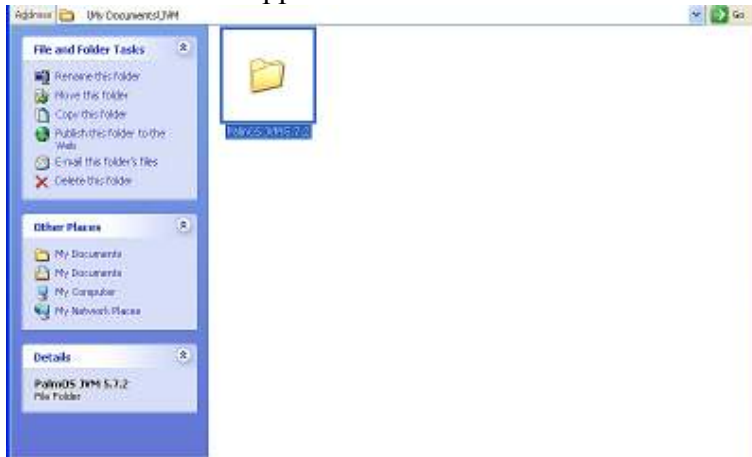
Click the [Next >]

Be sure 'Show extracted files' is checked

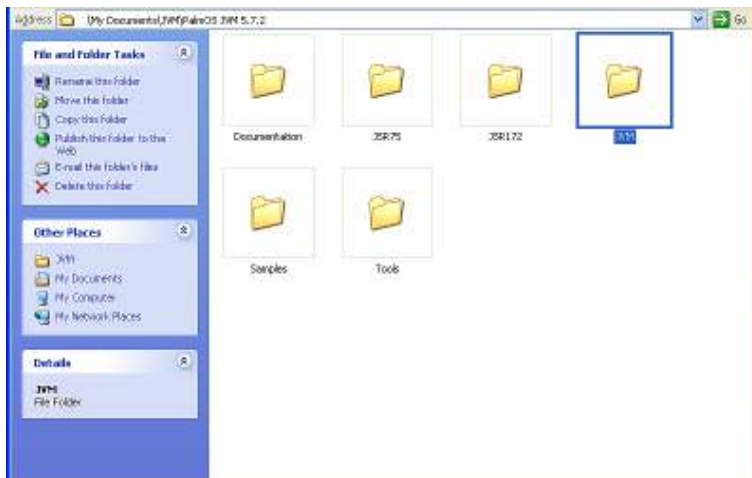


Click the [Finish >]

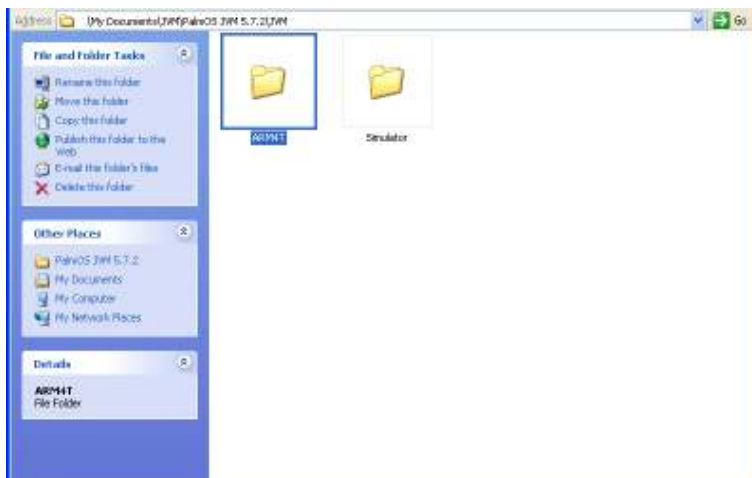
When the window appears...



Open the 'Palm OS JVM 5.7.2' folder

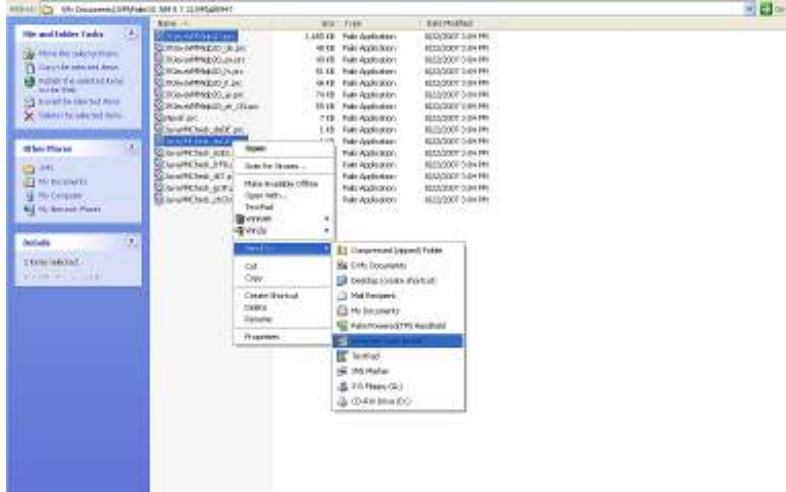


Open the 'JVM' folder



Open the 'ARM4T' folder

Select both files below by doing the following...



Select the “J9JavaVMMidp20.prc” file / Hold down the {ctrl} key
 Select the “JavaVMCheck_enUS.prc” file or the file that relates to your language of choice
 Release the {ctrl} key / Right-click on the second file you selected
 Select ‘Send To’ then select ‘palmOne Quick Install’ from the shortcut menu

Go to the ‘start’ menu
 Select ‘All Programs ►’ / ‘palmOne’ / ‘palmOne Quick Install’



Verified that both Java file are in the list

Connect your Palm device to the computer, via the USB connection cable



Be sure that ‘HotSync Manager’ is running on the computer, then press the synchronize button



Allow the synchronization progress time to complete both HotSync processes



Now disconnect your mobile handheld device from the computer by unplugging the USB cable from the Palm device

b. Installing the SoftDash Anywhere program onto the Palm OS handheld device

STEP 1: If necessary, press the {Home} key located below the touch screen



Select 'IBM Java VM'

STEP 2:



Type in the exact URL below...

{<http://www.connect2car.com/softdash/downloads/anywhere/Anywhere.jar>}

STEP 3:

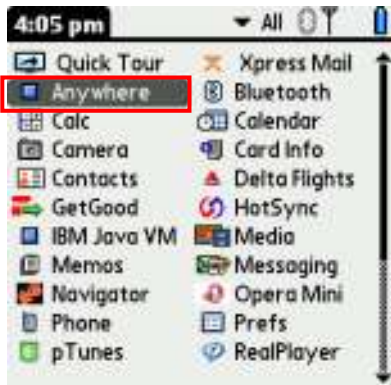
If prompted to connect to the internet choose 'Yes' and/or 'OK' correspondingly to any message that may appear during the installation processes

STEP 4:

When installation completes, press the {Home} key located below the touch screen

3. USING THE SOFTDASH ANYWHERE PROGRAM ON THE PALM DEVICE

STEP 1: If necessary, press the {Home} key located below the touch screen



Select 'Anywhere'

STEP 2:



STEP 3:



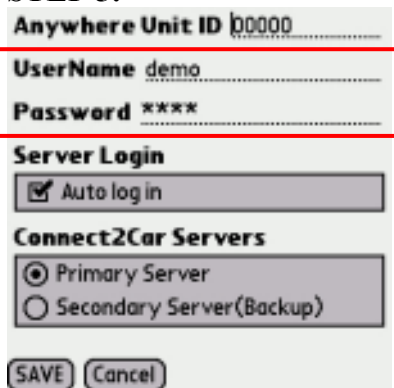
Select 'Settings'

STEP 4:



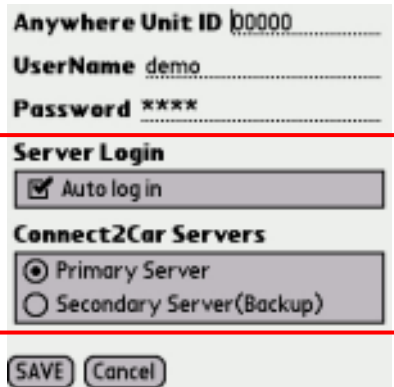
Your Unit ID is the same as the SIM Card ID provided on the MFC Anywhere New User Registration Form

STEP 5:



If you have not received your log-in information please contact support@connect2car.com

STEP 6:



Leave the last settings, as they are Click the [SAVE] button

STEP 7:



Select the desired controls. **Note:** More than one control commands can be sent at a time.

STEP 8:



Scroll down for more commands

STEP 9:



Click the [SEND] button

STEP 10:



If prompted, select 'Yes'
Click the [OK] button

STEP 11:



If prompted, check the box
"Never ask me again"
Click the [Yes] button

STEP 12:



If this error message appears, click the OK button and recheck the Unit ID, Username, & Password (see steps 4 & 5)

